

# Epidermolysis Bullosa

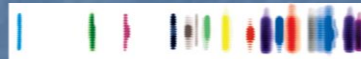
## The Anaesthetic Challenge

Dr Michael Duncan  
Anaesthetic lead for EB



*Please do not film, record, or take photographs of the presentations. Photographing of an image of somebody without their consent is a GMC reportable offence.*

Guy's and St Thomas' **NHS**  
NHS Foundation Trust



KING'S HEALTH PARTNERS

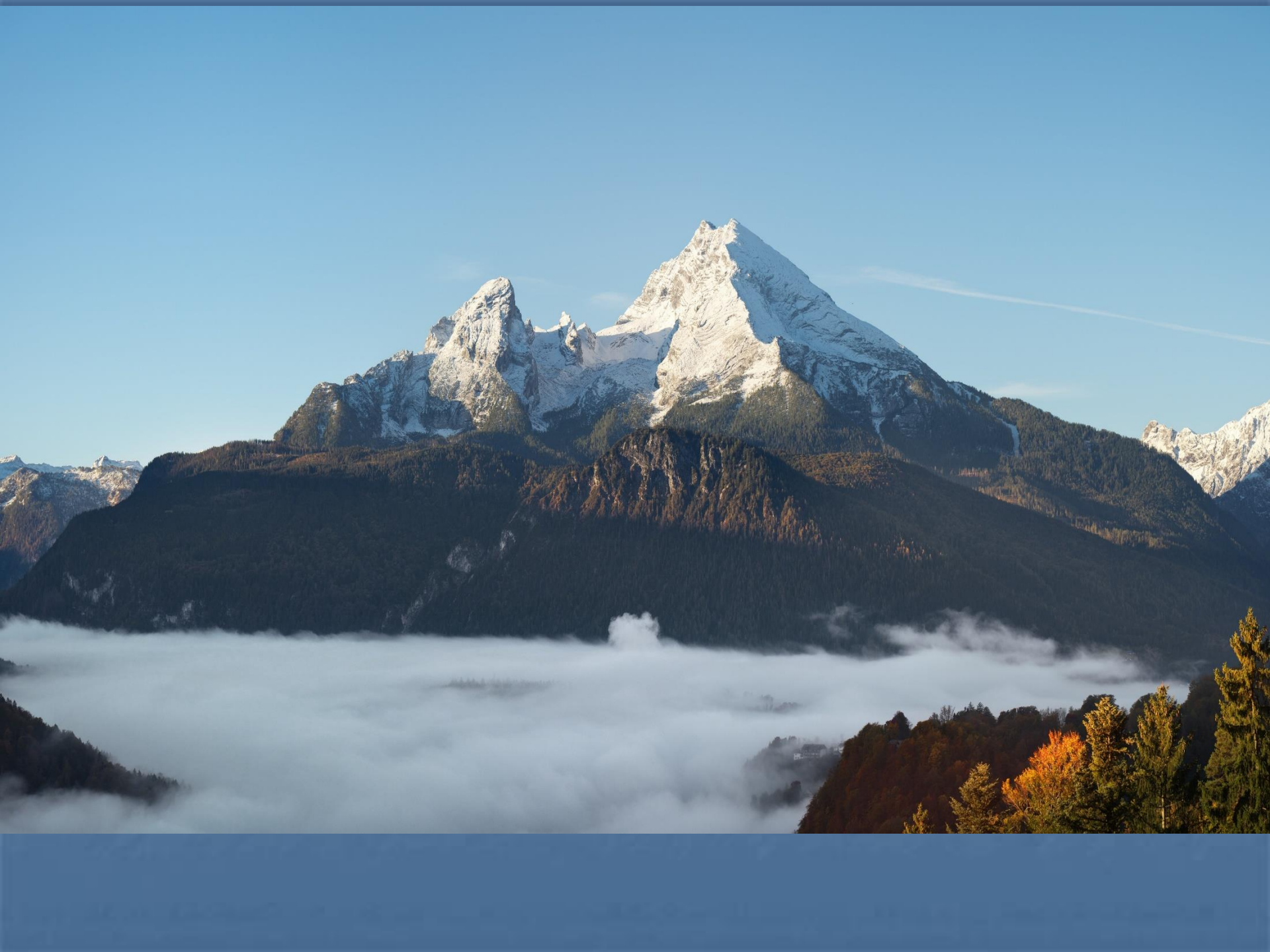
Pioneering better health for all

*©2021 St John's DermAcademy. This webinar is copyrighted and may not be reproduced, modified, adapted, published, translated in any way, in whole or in part or disclosed to a third party without the prior written consent of the St John's DermAcademy. All rights reserved.*









# Literature on Anaesthesia for EB

Griffin RP. *Anaesthesia*. 1993; **48**: 810 - 815

Bowen L. *CEACCP*. 2018;**18**:41-45 (BJA publication)

Ames WA. *BJA*. 1999; **82**: 746 - 51

Mittal BM et al. *Anesth Analg*. 2022; **134**:90 - 101

# **GSTT Anaesthesia for EB casemix**

Oesophageal dilatation 45 per annum

Skin Malignancy SCC removal/skin graft ~ 5 pa

Division of Syndactyly (+ skin graft) ~1-2 pa

Dental extractions ~ 2pa

Percutaneous Feeding tube insertion/revision

Miscellaneous ~ 2- 3

# Anaesthetic aptitudes

Vocational

Enjoy Challenge (Satellite locations)

Confident

Flexible with patients AND with guidelines e.g NMB/BIS

Patients do evolve and change



# Major Issues

Psychology

anxiety levels & catastrophising  
prior adverse experience + +

Skin/mucosa trauma

Veinous access

Airway

# Pre-assessment

Designated pre-assessment service in MDT

Previous anaesthetic records (~ 80 % info)

Airway assessment

iv access assessment

Psychological preparation

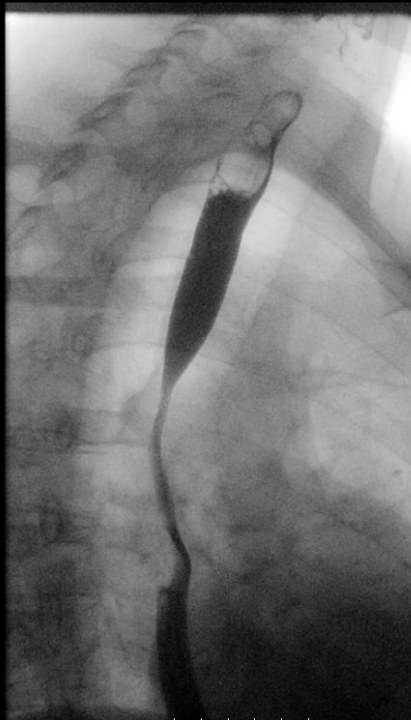




# Barium swallow. RDEB Inversa. Solitary mid thoracic long stricture

DOB: 05/02/1981  
1. Oesophagus ▾

C: 8191.0, W: 16383.0  
Guys and St Thomas Hospitals Foundation Trust  

▶ 09/03/2021, 10:18:39 ▾  
StationName:RF\_System





## The 'Waistline'





# Airway assessment and Management









# Skin precautions & manual handling



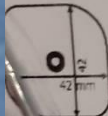


# EQUIPMENT / MATERIALS



**Ambu**  
Ideas that work for

60 units



X-ray

**Ambu® WhiteSensor 7841P**  
ECG Electrodes

REF

**7841P**



2021-01-28



2023-01-27

LOT

0541S40TRT



US : Rx only  
Made in India



055 M12P

(01) 0 8906035 28296 6 (11) 210128 (17) 230127 (10) 0541S40TRT

WhiteSensor





# IV access

Often patient choice of location

Avoid ACF

Often PICC/microsheath

Central –(?paed C lin - needs non EB fixation

Ultrasound guidance very useful and atraumatic



# Skin Protection





PROACT  
Hydra

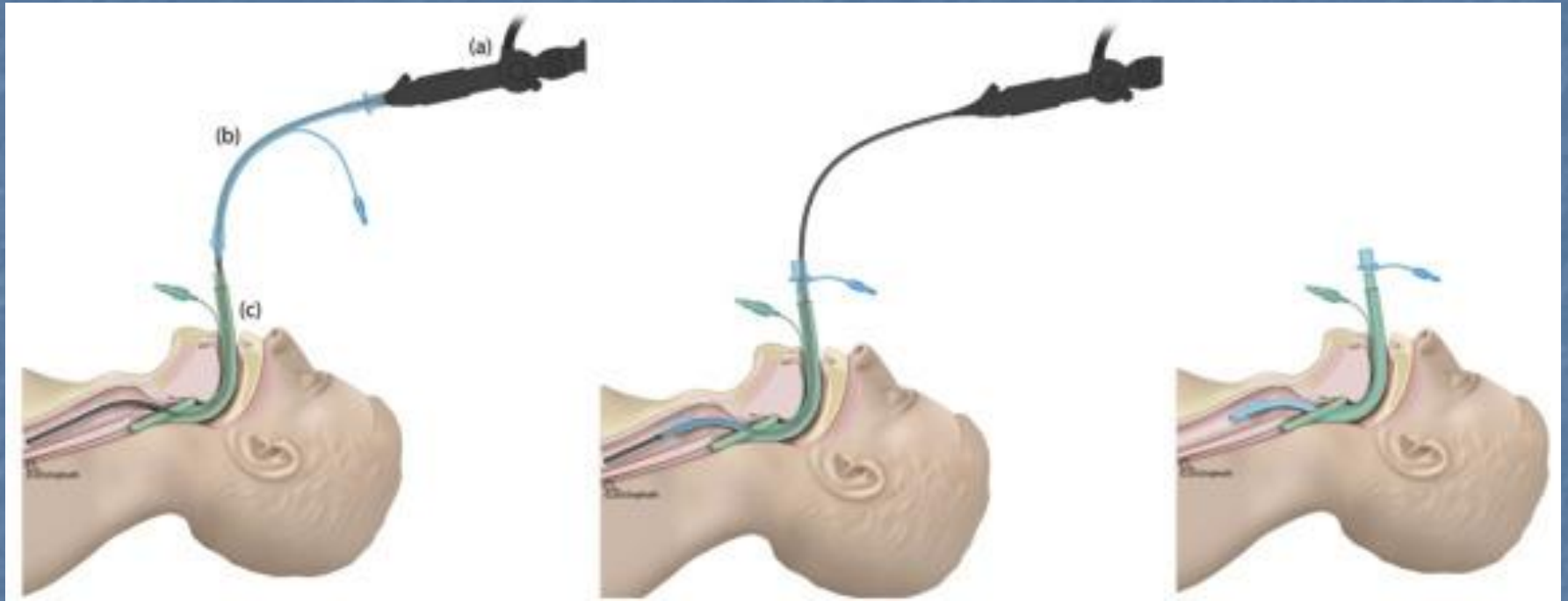


ET  
SIZE  
1.9

A-021/AT0-  
2123-02  
005-200321







# Summary

Remember the Mountain

'Land Der Berge  
Land am Strome'

[Michael.Duncan@gstt.nhs.uk](mailto:Michael.Duncan@gstt.nhs.uk)